

A MOUNTING BRACKET FOR EVERY USE

ADAPTED TO LEISURE

Basic range

Robust and simple to install, the basic UNIFIX is the economic mounting bracket, ideal to fix your panels on all flat surfaces (wall, concrete floor, timber frame.) Its tilting system allows an optimized angle to have the best electrical performances.

UNIFIX 100B

560 mm panels max
For Unisun 20.12M(x2)/ 20.24M(x2)/ 30.12M/ 50.12M/ 50.24M/ 55.12BC/ 80.12M/ 100.12M/ 100.24M/ 110.12BC
Landscape orientation
Ref 0644



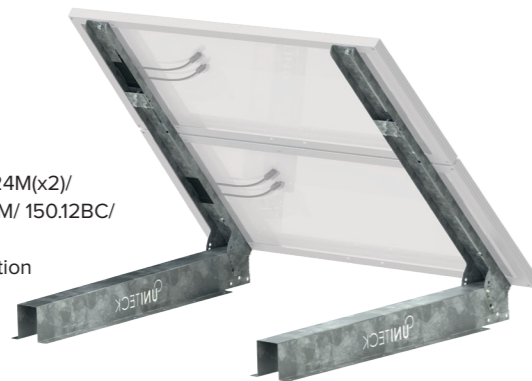
UNIFIX 150B

700 mm panels max
For Unisun 150.12M/ 150.24M/ 150.12BC
Landscape orientation
Ref 0545



UNIFIX 300B

1100 mm panels max
(=350-400W)
For Unisun 100.12M(x2)/ 100.24M(x2)/ 110.12BC(x2)/ 150.12M/ 150.24M/ 150.12BC/ 200.24M/ 300.12M
Landscape or portrait orientation
Ref 1092



UNITECK

Corrosion resistant galvanised steel + stainless steel screws

Easy to install

Reclinable from 0 to 90° (except 300B : 30 to 60°)

Wall mounting

Floor mounting

ADAPTED TO LEISURE

Universal range

Robust and easy to install, the universal UNIFIX is the ideal mounting bracket to fix your panels on all flat surfaces (wall, concrete floor, timber frame) or on round masts (diam. 40 to 60 mm).

Its tilting system enables an optimized angle for the best electrical production.

Universal, with its innovative design, the UNIFIX can be used on certain panels from other brands with different dimensions

UNITECK

Corrosion resistant Galvanised steel frame and screws

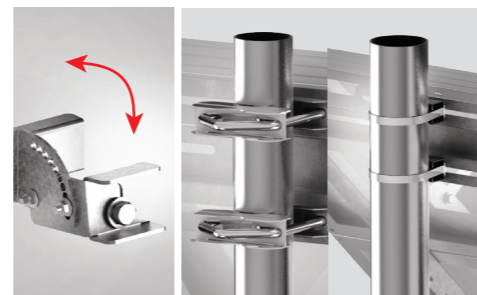
Reclinable from 0 to 90°

Easy to install

Fixation on round masts Ø 40 to 60 mm (flanges included)

Wall mounting

Floor mounting



Tilting system enables an optimized angle for the best electrical production.
Robust and strong fixation on round masts by means of flanges (included)
Attaches to all signage supports (flanges to be bought separately)



UNIFIX 20

For Unisun 10.12M/ 10.24M/ 20.12M/ 20.24M
Landscape orientation
Ref 0262



UNIFIX 50

For Unisun 30.12M/ 50.12M/ 50.24M/ 55.12BC
Landscape orientation
Ref 0279



UNIFIX 100

For Unisun 80.12M/ 100.12M/ 100.24M/ 110.12BC
Landscape orientation
Ref 0316

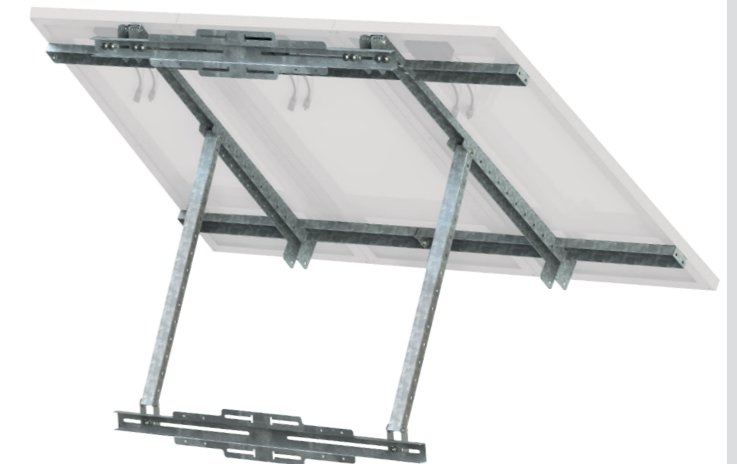


UNIFIX 200

For Unisun 80.12M (x2)/ 100.12M (x2)/ 100.24M (x2)/ 110.12BC (x2)/ 150.12M/ 150.24M/ 150.12BC/ 200.24M
Ref 0361



1 panel or 2 panels



UNIFIX 300

For Unisun 80.12M (x3)/ 100.12M (x3)/ 110.12BC (x3)/ 100.24M (x3)/ 150.24M (x2)/ 150.12BC (x2)/ 200.24M/ 300.12M
Ref 0378



1 panel or 2 panels or 3 panels

COMPATIBILITY

	Panels number			Hole spacing panels (mm)		Panel dimension max. (mm)	
	x 1	x 2	x 3	Length	Height	Length	Height
UNIFIX 20	✓			80 - 505	100 - 300	No max.	400
UNIFIX 50	✓			80 - 510	180 - 510	No max.	550
UNIFIX 100	✓			340 - 885	180 - 510	No max.	550
UNIFIX 200	✓			340 - 885	400 - 1050	No max.	1100
		✓		340 - 885	150 - 500	No max.	550
	✓			150 - 1600	400 - 1030	No max.	1200
UNIFIX 300		✓		150 - 750	400 - 1030	No max.	880
			✓	150 - 500	400 - 1030	No max.	550